

# HUMAN PHYSIOLOGY CHARTS

A set of 31 charts  
Synthetic, Size 70 x 100 cm (In English only)

**HP01S : Human Skeleton**

## HUMAN SKELETON

**ANTERIOR VIEW** **POSTERIOR VIEW** **SKULL (Superior view)**

**THE RIB CAGE (Front View)**

**COMPACT BONE IS EMPOWERED BY OSTEOCYTES CEMENTED TOGETHER**

**SKELETAL SYSTEM**

**TYPES OF SYNOVIAL JOINT** **VERTEBRAL COLUMN**

**LEFT FOOT VIEW** **LEFT HAND VIEW**

**HP02S : Human Muscles**

## HUMAN MUSCLES

**THE SKELETAL MUSCLE CELL**

**THE MYOFIBRIL**

**MUSCLES OF ANTERIOR THIGH**

**MUSCLES OF THE UPPER AND LOWER LIMBS**

**TYPES OF MUSCLES**

**HP03S : Blood Circulation**

## BLOOD CIRCULATION

**THE HEART AND CIRCULATION** **THE WALL OF ARTERY**

**ARTERIES AT THE BASE OF THE BRAIN**

**THE HEARTIC-VENAL SYSTEM**

**THE CARDIOVASCULAR SYSTEM**

**BLOOD VESSEL** **STRUCTURE OF A VEIN**

**HP04S : Nervous System**

## NERVOUS SYSTEM

**FUNCTIONAL AREAS OF THE CEREBRAL CORTEX** **THE NERVOUS SYSTEM** **NERVOUS SYSTEM**

**CELLS OF THE CEREBRAL CORTEX** **PERIPHERY OF SPINAL NERVE** **NERVOUS SYSTEM**

**NERVOUS SYSTEM**

**NERVOUS SYSTEM**

**HP05S : Digestive System**

## DIGESTIVE SYSTEM

**THE MOUTH** **THE ORGANS OF DIGESTION** **THE STOMACH**

**THE SMALL INTESTINE** **THE LARGE INTESTINE** **THE LIVER**

**Digestive System**

**HP06S : Human Eye**

## HUMAN EYE

**HORIZONTAL SECTION OF THE HUMAN EYEBALL** **ADDITIONAL STRUCTURE**

**HOW THE EYE BALL MOVES**

**LATERAL VIEW OF LEFT EYE** **FOCUSING**

**CORNEA**

**HOW SOUND IS HEARD**

**HP07S : Ear**

## EAR

**STRUCTURE OF THE EAR** **TYPICAL MEMBRANE AND OSTEOGENIC CELL**

**INNER EAR** **MEMBRANOUS COCHLEA**

**HOW SOUND IS HEARD** **COCHLEA INLET**

**HP08S : Kidney, Skin, Urinary & Excretory System**

## KIDNEY, SKIN, URINARY & EXCRETORY SYSTEM

**MALE BLADDER AND URETHRA** **SKIN AND URINARY TRACT** **ANATOMY OF KIDNEY**

**FEMALE BLADDER AND URETHRA** **STRUCTURE OF SKIN** **STRUCTURE OF SKIN**

**SKIN AND URINARY TRACT**

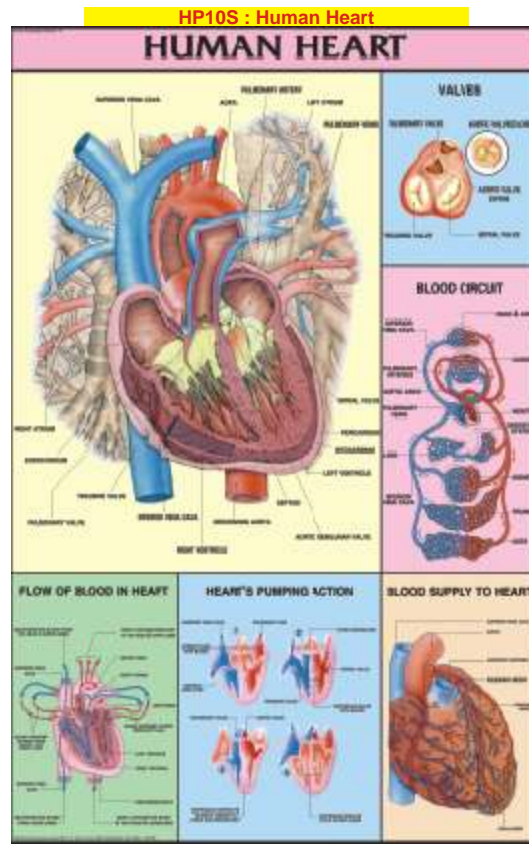
# HUMAN PHYSIOLOGY CHARTS

A set of 31 charts

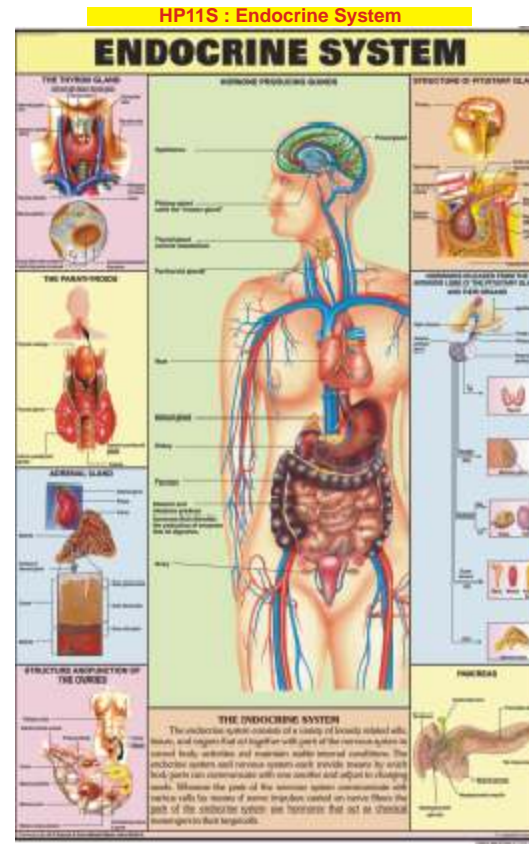
Synthetic, Size 70 x 100 cm (In English only)



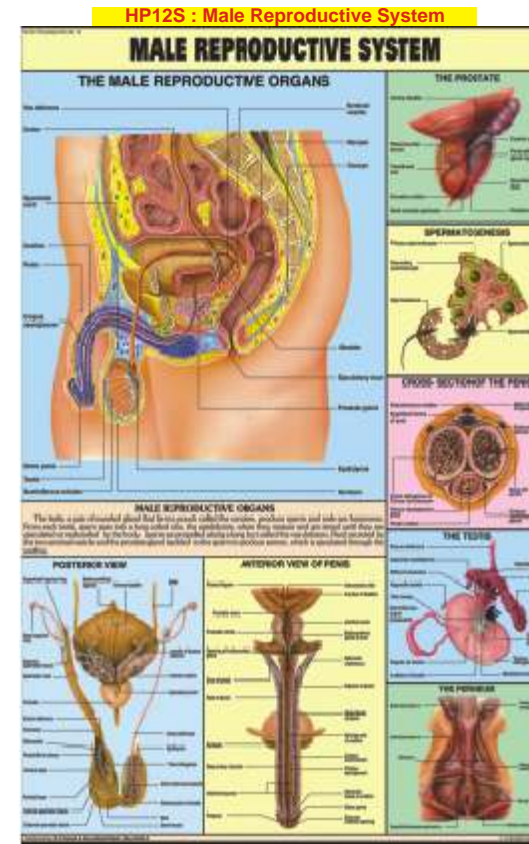
HP09S : Respiratory System



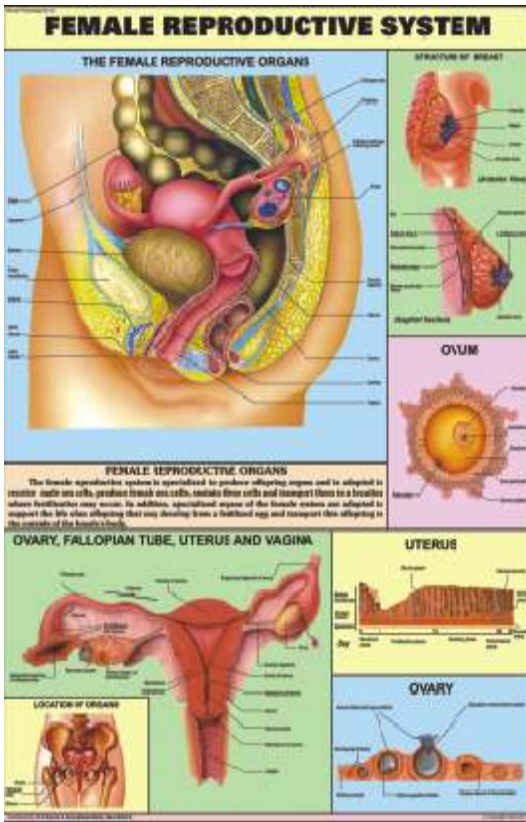
HP10S : Human Heart



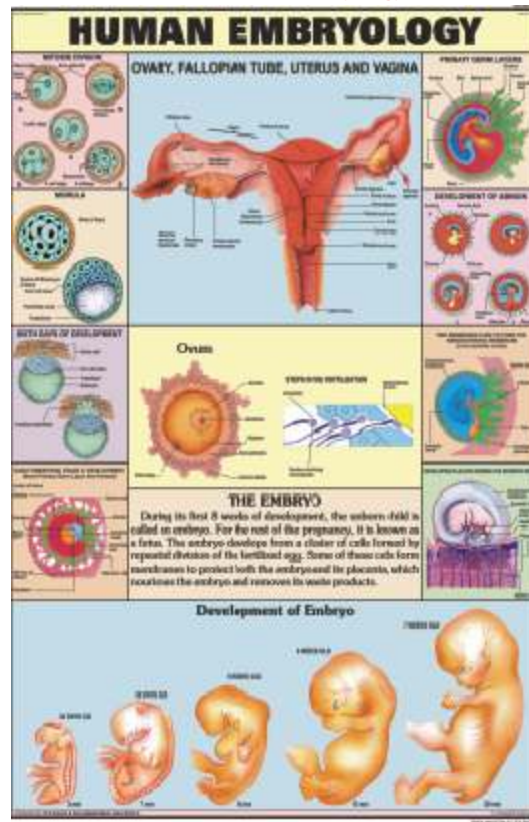
HP11S : Endocrine System



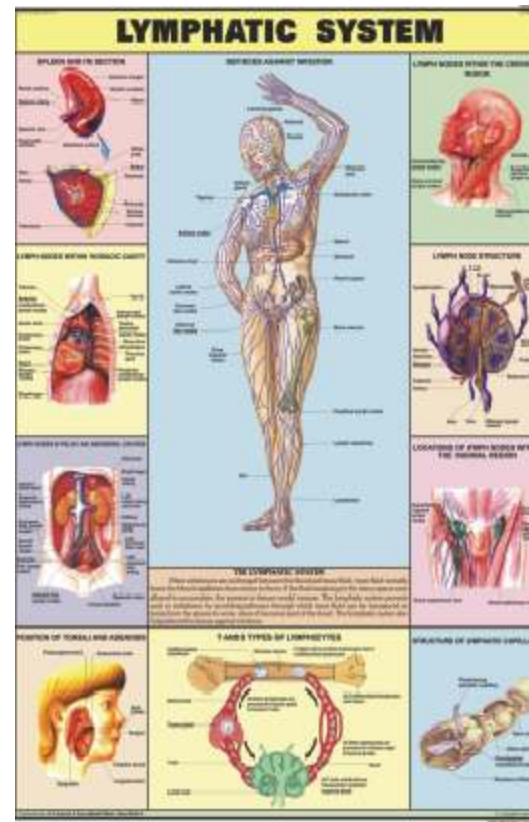
HP12S : Male Reproductive System



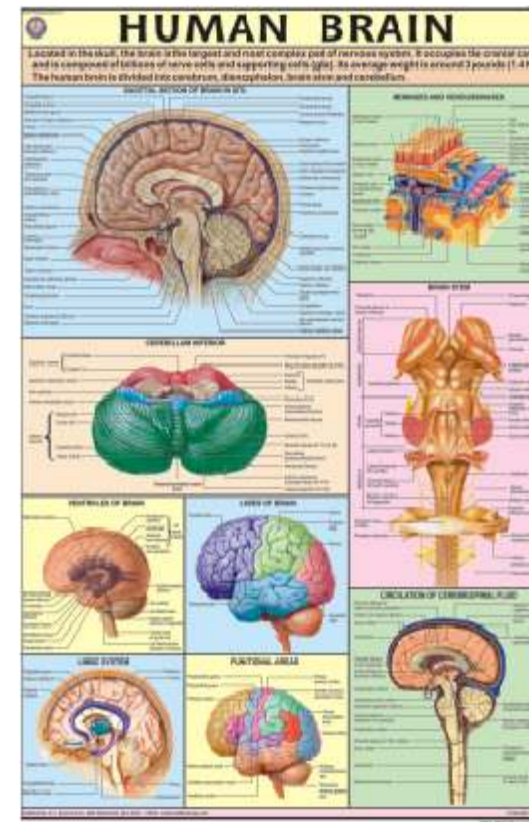
HP13S : Female Reproductive System



HP14S : Human Embryology



HP15S : Lymphatic System



HP16S : Human Brain

### HP17S : Human Teeth

## HUMAN TEETH

Teeth are vertical keratinized appendages to the jaw bones and with special attachments to the jaws. Humans develop two sets of teeth in a normal lifetime. The first set, in mammals, are known as the deciduous, primary or baby teeth. The secondary or permanent set, comprising 32 teeth, begins to erupt in the late teens and the age of 20 years. There are 16 teeth in each jaw.

**STRUCTURE OF THE MOUTH**

**TEETH-STRUCTURE**

**TEETHING**

**TYPES OF TEETH**

**MANDIBULAR DENTAL ARCADE**

**MAXILLARY AND MANDIBULAR TEETH (SUPERIOR - Lateral aspect)**

**ROOT CANAL THERAPY**

### HP18S : Pregnancy And Birth

## PREGNANCY AND BIRTH

Pregnancy is the state of having a developing fetus in the uterus which extends from conception to labor terminated.

Pregnancy takes approximately 283 days from the first day of last menstrual period (approximately 267 days from conception).

**Perfission and Penetration of Blastocyst**

**Development of Chorion and Amnion**

**Placenta**

**STAGES OF LABOUR (PARTURITION)**

**Amniotic Sac**

### HP19S : Human Kidney

## HUMAN KIDNEY

**Right Kidney (Superior)**

**Left Kidney (Superior)**

**Blood Vessels in Parenchyma of Kidney**

**Renal Capsule**

**Renal Artery**

**Renal Vein and Vein in Iliac**

### HP20S : Urinary Tract

## URINARY TRACT

The urinary system regulates the volume and composition of fluids in the body and excretes waste products and excess fluid. Urine produced and filtered from the blood by the kidneys for excretion in the urine, which descends through the ureters to the bladder. Urine is stored here until a convenient time, then the muscles of the bladder contract, allowing it to be expelled from the body through the urethra.

**Female Urinary Tract (Superior section)**

**Female Urinary Tract (Inferior section)**

**Male Bladder**

**Male Urinary Tract (Superior section)**

**Male Urinary Tract (Inferior section)**

### HP21S : Human Skull

## HUMAN SKULL

The skull houses the brain, and a part of the vestibular apparatus, sensory organs, and the respiratory tract. It is composed of 22 bones in the cranium and 14 bones in the face. The skull is divided into the cranium and the facial skeleton.

**Skull (Anterior)**

**Skull (Posterior)**

**Skull (Lateral)**

**Skull (Superior)**

**Skull (Inferior)**

**Skull (Medial)**

**Skull (Lateral)**

**Skull (Superior)**

**Skull (Inferior)**

### HP22S : Ear, Nose & Throat

## EAR, NOSE & THROAT

The ear has two main functions: to receive and transmit sound waves and to maintain equilibrium. The nose is the respiratory organ for air entering and leaving the body. The throat is the passage for food and air.

**FRONTAL SECTION OF EAR**

**ROSTRAL SECTION OF EAR**

**PERIPHERAL SECTION OF EAR**

**INTERNAL SECTION OF EAR**

**EXTERNAL SECTION OF EAR**

**INTERNAL SECTION OF EAR**

**EXTERNAL SECTION OF EAR**

### HP23S : Liver, Gallbladder & Pancreas

## LIVER, GALLBLADDER & PANCREAS

**LIVER (Anterior)**

**LIVER (Dorsal)**

**LIVER LOBULE**

**GALLBLADDER AND BILIARY DUCT SYSTEM**

**PANCREAS**

**PANCREAS**

**PANCREAS**

**PANCREAS**

### HP24S : Human Lungs

## HUMAN LUNGS

The lungs are soft, spongy, reddish organs located in the thoracic cavity. They are covered by the pleural membrane and are separated from the heart by the mediastinum. The lungs are divided into lobes and segments.

**LUNGS**

**BRANCHES OF THE BRONCHIAL TREE**

**LYMPH VESSELS AND NODES OF LUNG**

**INTRAPLEURAL BLOOD CIRCULATION**

**NEURONIC FUNCTIONS OF THE LUNG**

**CROSS-SECTION OF ALVEOLUS**

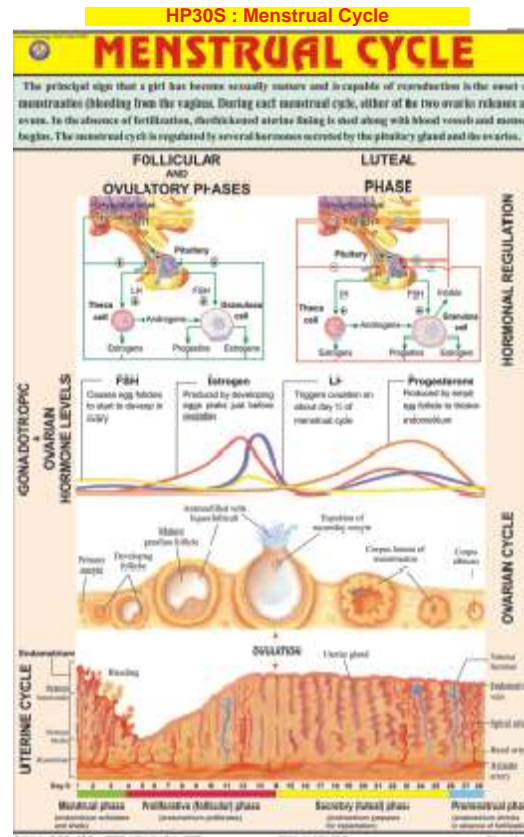
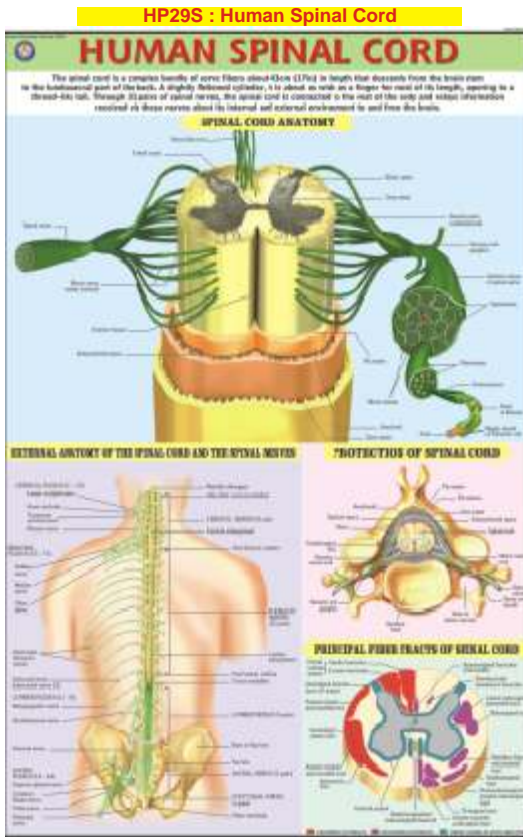
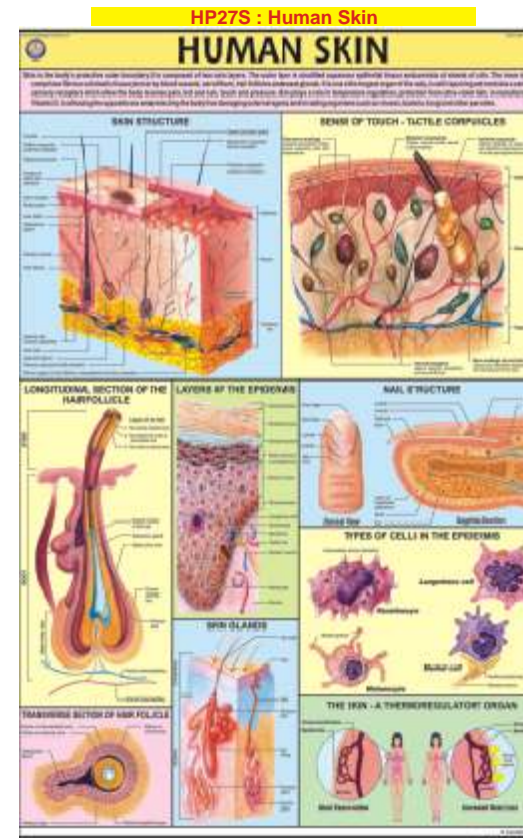
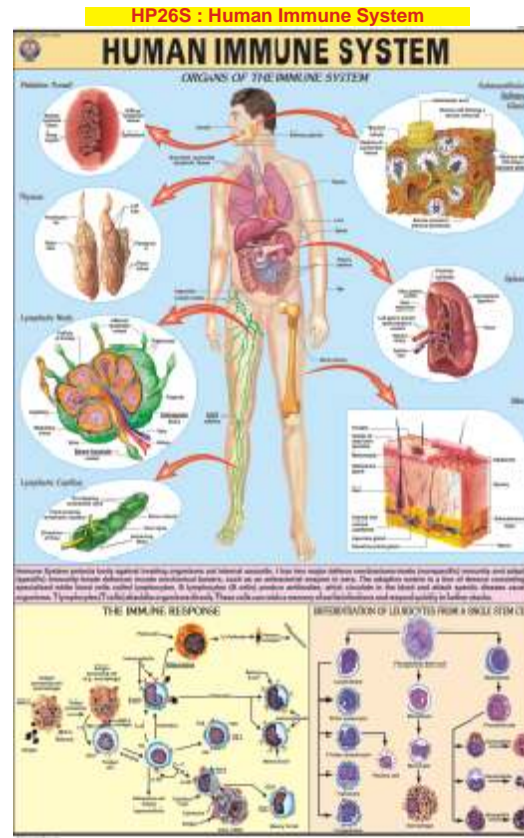
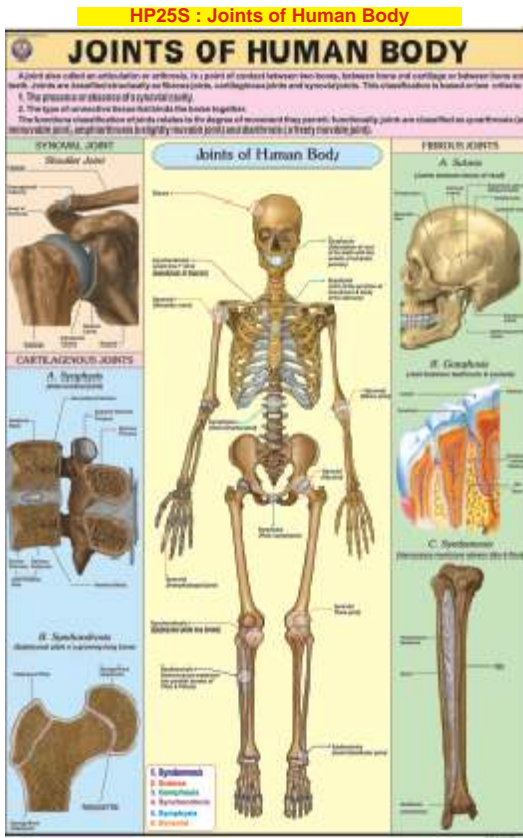
**MEDIAL VIEW OF RIGHT LUNG**

**MEDIAL VIEW OF LEFT LUNG**

# HUMAN PHYSIOLOGY CHARTS

A set of 31 charts

Synthetic, Size 70 x 100 cm (In English only)



**Human Physiology Charts**  
 The first fifteen charts of this series are also available in size 70 x 100 cm, Laminated, english - hindi combined.

**Human Physiology Charts**  
**Small size**  
 The first ten charts of this series are also available in size 50 x 75 cm, Laminated, english - hindi combined.